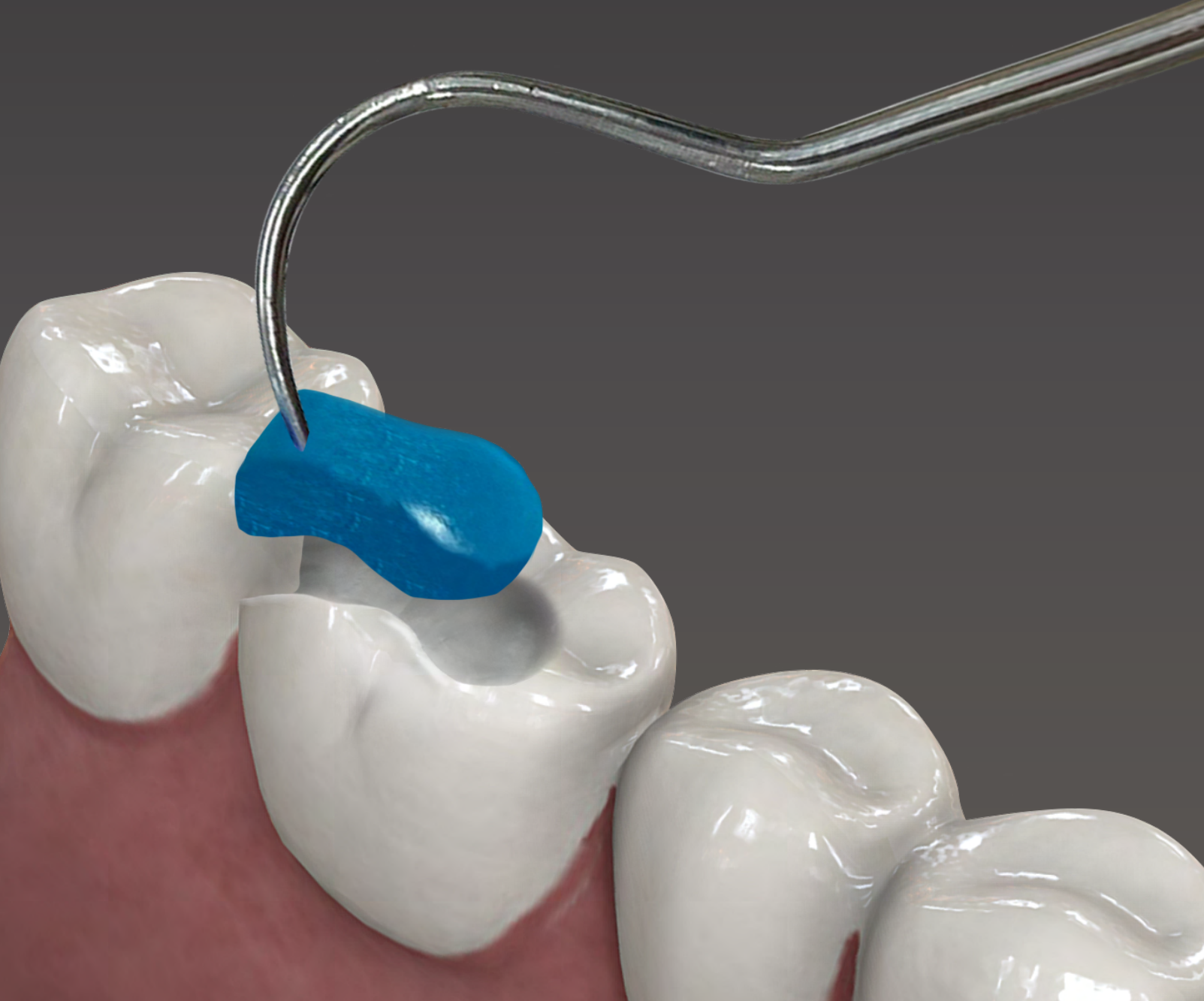




Temp·it / Temp·it Flow
Light Curing Temporary Filling Material

Removed in one piece
No Damage, No residue

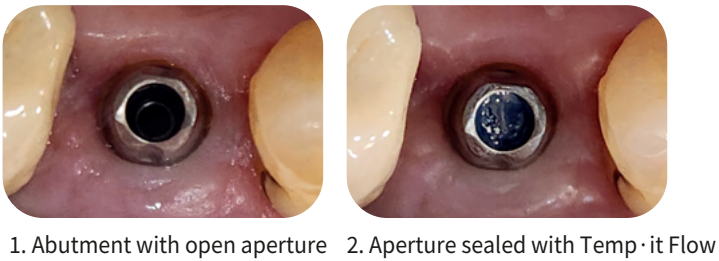


✓ Clinical Case

■ Clinical Case _ Posterior Temporary Restoration

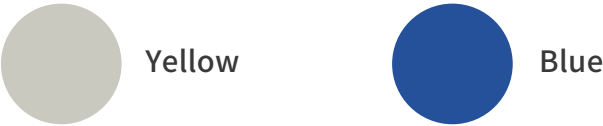


■ Clinical Case _ Implant Abutments



✓ Shade Guide

>> Temp·it and Temp·it Flow has yellow and blue shades. Yellow is as tooth color, and you can use it universally. Blue shade is easy to be distinguished. It is suitable for posterior to remind patients come back for final restoration.



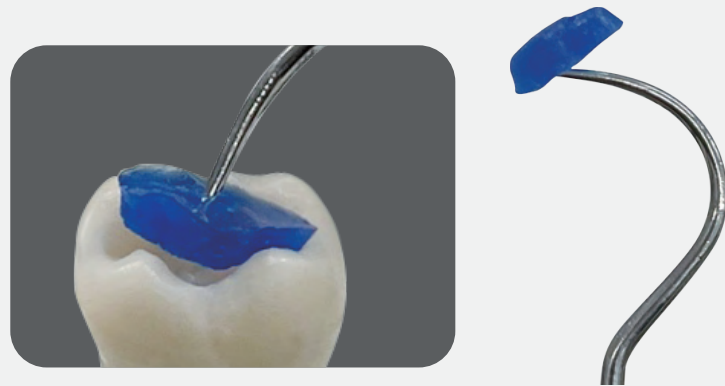
✓ Package

Available	Shade	Contents
Temp·it	Yellow, Blue	3g x 3syringes
Temp·it Flow	Yellow, Blue	1.2ml x 4syringes



✓ Elasticity

>> As the material is elastic, even after light cured, it is easy to be removed in one piece without shattering or tearing. There is no need to use a drill to remove the temporary filling. Thus, the cavity hold the same shape and has no adverse effect on the fit of the final restoration.



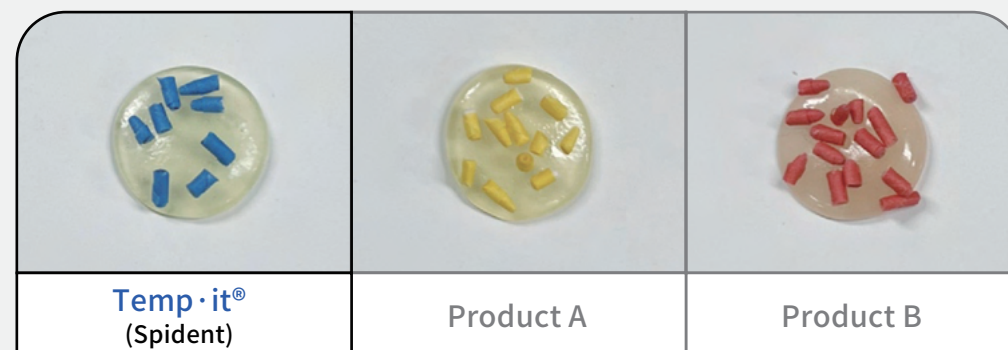
✓ Available for light curing

>> Temp·it and Temp·it Flow are light curing products. You do not need to wait for the material to be set. Just light cure for 10 seconds and reduce chair time.



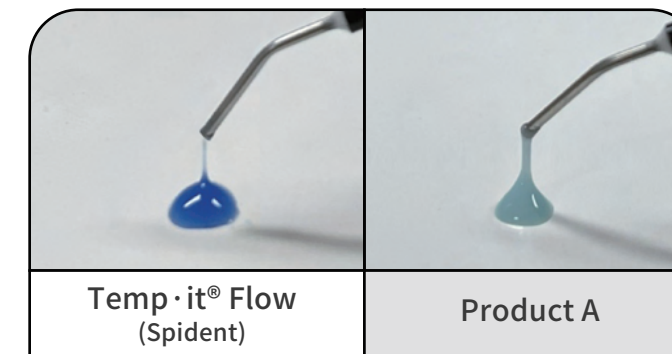
✓ Non-Stickiness

>> Adequate ratio of filler and using non-sticky elastic monomer minimized stickiness on Temp·it. Therefore, it is much easy to handle with instruments.



✓ Temp·it Flow

>> Temp·it Flow has lower viscosity and recommended to be used in narrow parts where instruments are hard to reach.



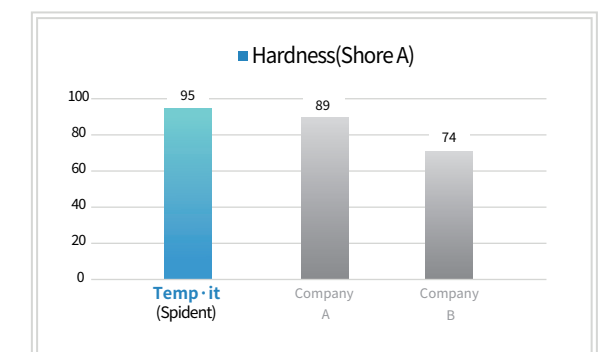
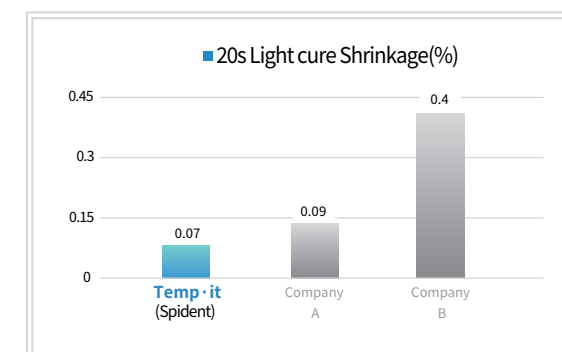
✓ Mini dock

>> Temp·it offers a mini dock along with the package. You can attach the dock on the wall or the table to place Temp·it where you want to.



✓ Excellent mechanical Properties

>>Temp·it has excellent sealing ability as it has very low polymerization shrinkage rate. It protects from undesirable food particles and bacteria entering the cavity. And it has ideal hardness to resist the scratching and abrasion temporarily.



*Source : Spident R&D center internal data.