



Ready for better adhesion !



FineEtch

37% Phosphoric Acid Gel

contains 37% phosphoric acid and supplies semi-gel consistency for ideal applications.

It effectively removes smear layers and enhances bonding between tooth and restorative material.

FineEtch

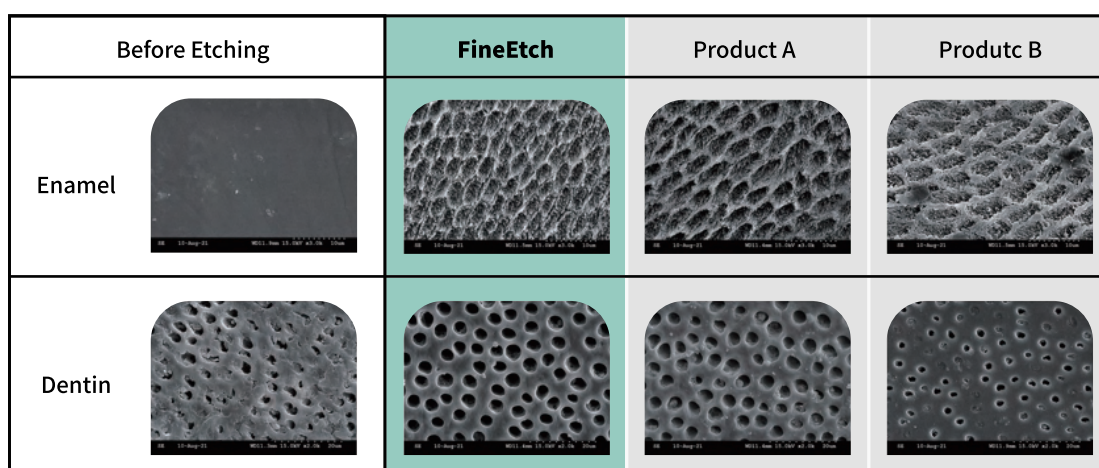
37% Phosphoric Acid Gel



Characteristics

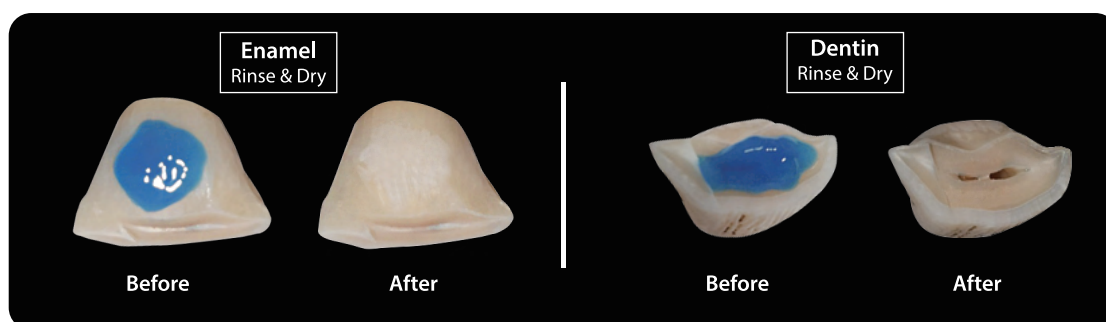
- 37% phosphoric acid and semi-gel consistency for ideal applications
- Effective removal of smear layers, enhancing the bonding between tooth and restorative material
- Bio-compatible polymeric materials contained
- Excellent viscosity
- Complete residue-free after water-spray

✓ Effective removal



✓ Complete residue-free after water-spray

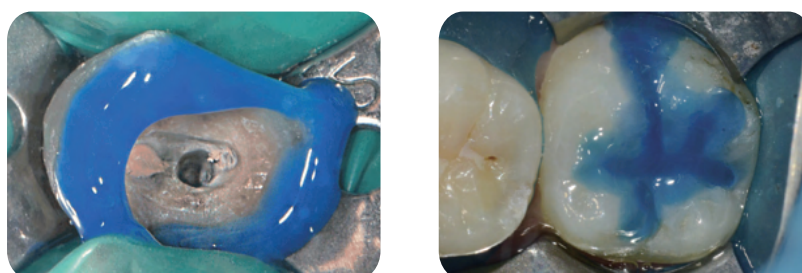
>> It can be removed cleanly without leaving any residue after rinsing.



*Source : Spident R&D center internal data.

✓ Ideal for all type of etching system

>> High viscosity offers precise placement, offering maximum handling.



SPIDENT CO., LTD.

203&312, Korea Industrial Complex, 722 Gojan-dong,
Namdong-gu, Incheon, Korea, 21692

T +82-32-821-0071 F +82-32-821-0074
E synergy@spident.co.kr export@spident.co.kr