

## Clinical Case \_ Posterior Restoration



[Figure. 1] Before treatment



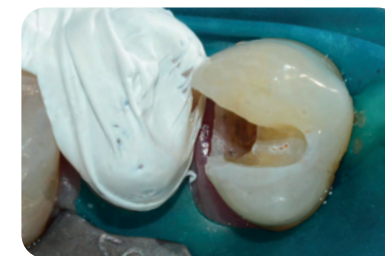
[Figure. 2] Remove amalgam



[Figure. 3] Isolate with Teflon Tape



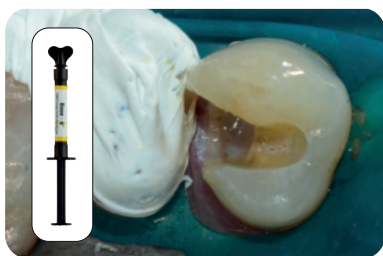
[Figure. 4] Apply FineEtch, etchant for 10~15 seconds



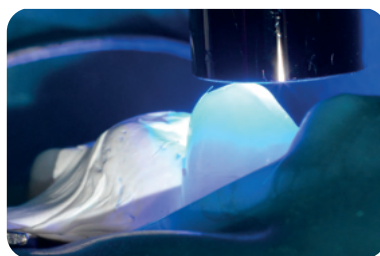
[Figure. 5] Rinse thoroughly with water and dry



[Figure. 6] Apply EsBond, adhesive and light-cure for 10 seconds (LED 1200mW/cm<sup>2</sup>)



[Figure. 7] Restore with Base it as liner



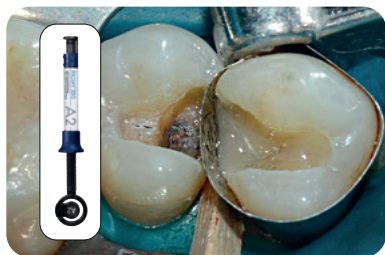
[Figure. 8] Light-cure for 10 seconds (LED 1200mW/cm<sup>2</sup>)



[Figure. 9] Restore with EsFlow LV as base



[Figure. 10] Light-cure for 10 seconds (LED 1200mW/cm<sup>2</sup>)



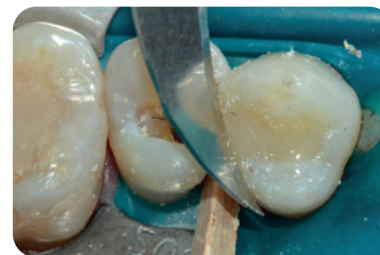
[Figure. 11] Build up the wall at proximal side and light-cure for 20 seconds (LED 1200mW/cm<sup>2</sup>)



[Figure. 12] Restore with EsCom 250



[Figure. 13] Light-cure for 10 seconds (LED 1200mW/cm<sup>2</sup>)



[Figure. 14] Remove the excess composite resin



[Figure. 15] Polish and finish