

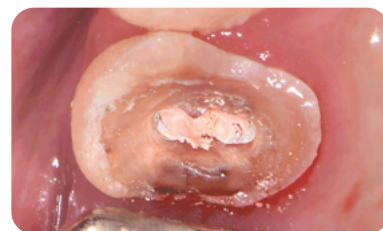
✓ Clinical Case



1. X-Ray Image.



2. Remove temporary crown.



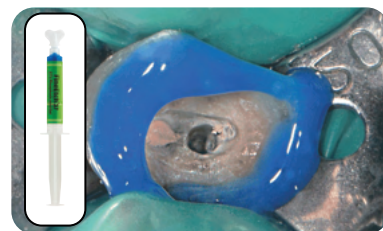
3. Remove temporary filling.



4. Make space for post using drill.



5. Use 3% NaOCl (20ml) to thoroughly clean the root canal wall.



6. Apply FineEtch for 10 seconds, rinse thoroughly with water.



7. Remove excess moisture with Paper Point.



8. Mix EsBond and EsBond Activator.



9. Apply it in the root canal and dentin for 15 seconds twice.



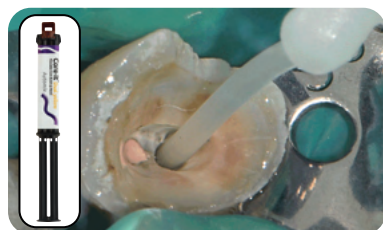
10. Remove the excess bonding using Paper Point so that it does not interfere with the seating of the post.



11. Light cure for 20 seconds. (LED 1200mW /cm²)



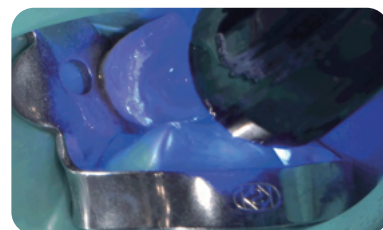
12. After cleaning the surface of the post with an alcohol sponge, apply Silane to the surface.



13. Install the elongation tip and slowly inject Core·it Dual from the end of the root canal.



14. Insert the post immediately into the post space within 1 minute after Core·it Dual application.



15. After inserting the post completely, light curing should be done for more than 40 seconds. (LED 1200mW /cm²)



White

Core·it[®]

Flowable Core Build up Resin

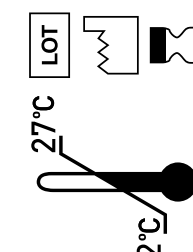
Dual Automix

10g

SPIDENT

SPIDENT CO., LTD.

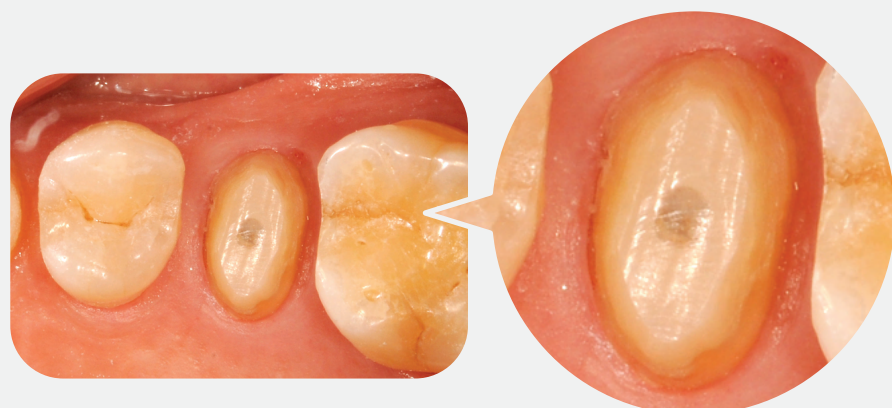
Made in Korea



SPIDENT CO., LTD.
203&312, Korea Industrial Complex,
722 Gojan-dong, Namdong-gu, Incheon, Korea, 21692
T +82-32-821-0071 F +82-32-821-0074
E synergy@spident.co.kr export@spident.co.kr

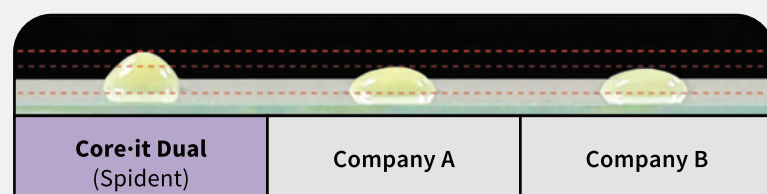
✓ Dentin like trimmability

>> You can optimally control the bur so that no difference is felt, especially at the transitions between dentin and Core·it Dual. This helps to make groove-free preparation without under-cut.



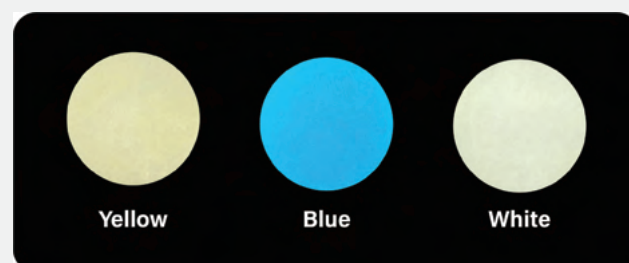
✓ Exceptional thixotropic property

>> Core·it dual has thixotropic property and it can hold shape when you build up. It also has ideal flowability during post cementation.



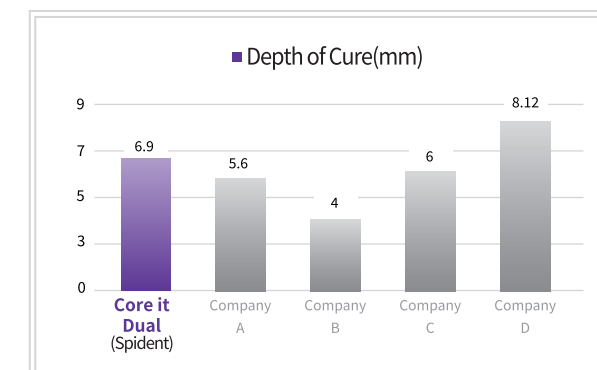
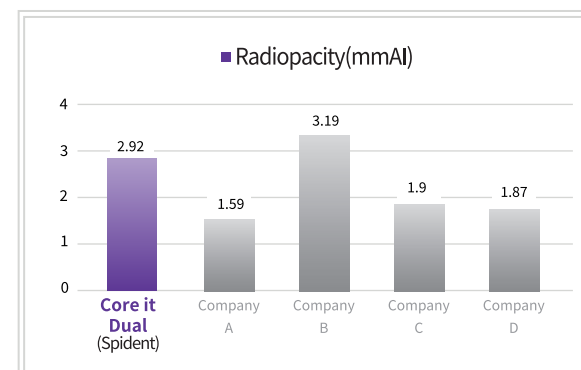
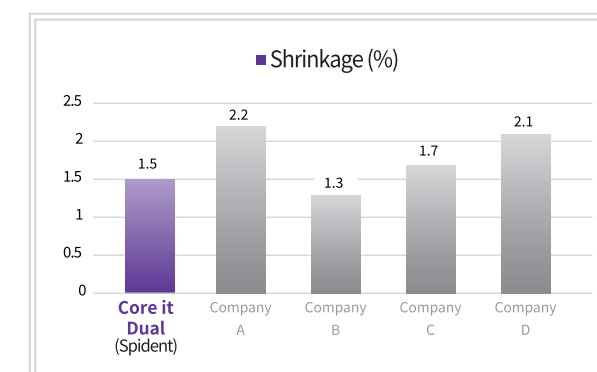
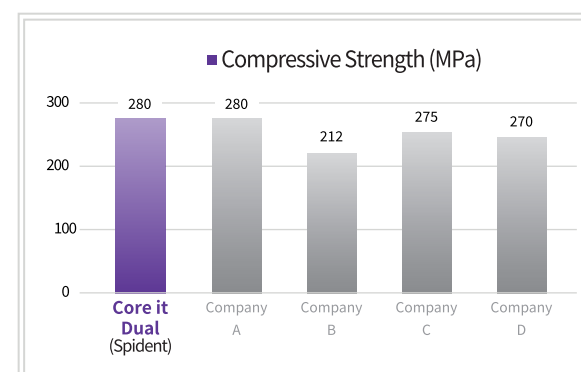
✓ Multiple shades

>> Core·it dual has 3 shades. Yellow is as tooth color, and blue is for posterior as it is easy to distinguish. White is brighter than yellow and suitable for whitened teeth.



✓ Excellent mechanical properties

>> Core·it dual has compressive strength similar to dentin and shows excellent physical properties.

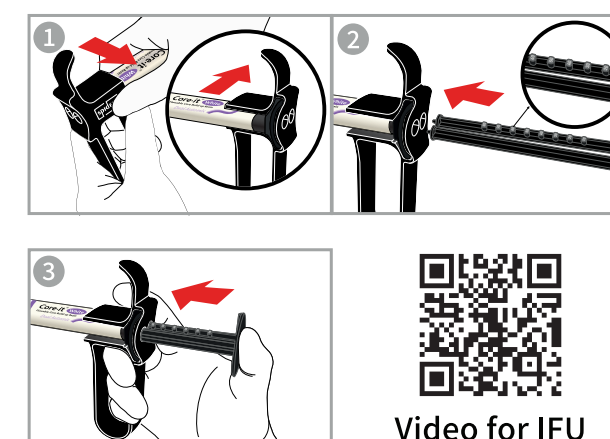


✓ DS Dispenser

>> Using DS dispenser makes it easy to extrude. By the marking on plunger, you can always check the remaining amount of material.



How to Use



Video for IFU

·Dispenser for 1:1 dual syringe