



www.spident.co.kr

2024-25 **SPIDENT** Product Catalog

SPIDENT

PRODUCT CATALOG

www.spident.co.kr

SPIDENT CO., LTD.
203&312, Korea Industrial Complex,
722 Gojan-dong, Namdong-gu, Incheon, Korea, 21692
T +82-32-821-0071 F +82-32-821-0074
E synergy@spident.co.kr export@spident.co.kr



2024 - 25



Introduction

Founded in 1997, SPIDENT CO LTD has been at the forefront of dental innovation, culminating in the establishment of our R&D center in November 2004.

With certifications including CE, FDA, and ISO 13485, we manage all aspects of our operations —from R&D and quality control to product design, marketing, and customer service —with a singular focus on ensuring your complete satisfaction.

Spanning over 100 countries, we are committed to delivering excellence in dental biomaterials. Our vision is to become a global top 10 company in the dental biomaterial market, prioritizing societal and humanistic values.

Our mission is to enhance oral care accessibility and create a world where healthy, happy smiles abound by delivering optimal value.

History of SPIDENT

- 1997 Establishment
 - Spident Co., Ltd. establishment
- 2006 Established R&D Center
- 2010 The growth process
 - Certified CE, ISO 13485, FDA
 - Launched chemical products to overseas market
 - Awarded in recognition of \$1M in exports
- 2014 Development
 - Awarded in recognition of \$5m in exports
 - Launched NOP Needle
- 2016 Glass Ionomer
 - Research & Development of GIC (First manufacturer in Korea)
- 2017 20th Foundation Anniversary
 - Selected as Global Strong Company
- 2018 Overseas Factory
 - Established a factory in China
- 2019 Development
 - Awarded in recognition of \$10M in exports
- 2023 Development
 - Awarded in recognition of \$20M in exports

EsFlow[®]

Light Curing Flowable Composite Resin

“Application is awesome
- I loved the small tip.”

“Easy to finish,
very good polish
and final appearance.”

*comments from DA



RESTORATIVES

EsCom100
EsCom250
EsFlow / EsFlow LV
EsFlow PLUS ^{NEW}
EsFlow PLUS Injectable ^{NEW}
EsFlow PLUS Bulk Fill ^{NEW}
EsFlow PLUS Core it LC ^{NEW}
Core.it Dual
BaGIC II

TEMPORARY

Temp.it / Temp.it Flow
Hexa-Temp(EsTemp C&B)

CEMENTS

EsTemp Eugenol/NE
EsTemp Implant
EsCem
EsCem RMGI ^{NEW}

ADHESIVE & ETCHANT

K-Bond Universal ^{NEW}
EsBond
FineEtch

ENDODONTICS

Guttapercha Points
Paper Points
VioPex
VioPaste
VioSeal SoftPrep

PREVENTIVES

Seal.it

BASE & LINER

Base.it

COSMETIC DENTISTRY

FineDam
Block-out Resin



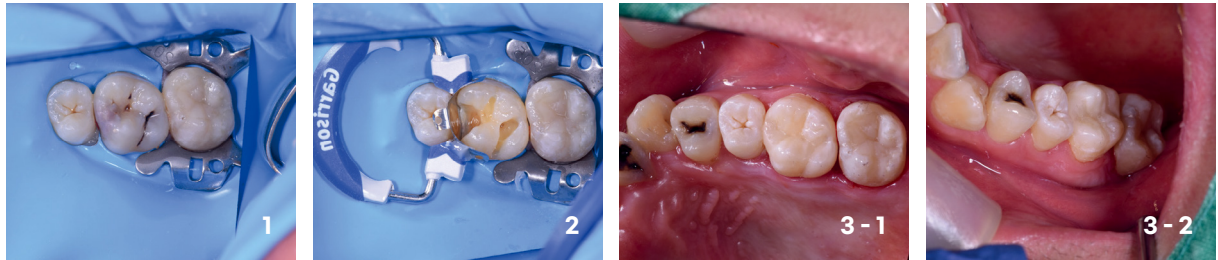
EsCom100

Light-cured restorative hybrid composite resin

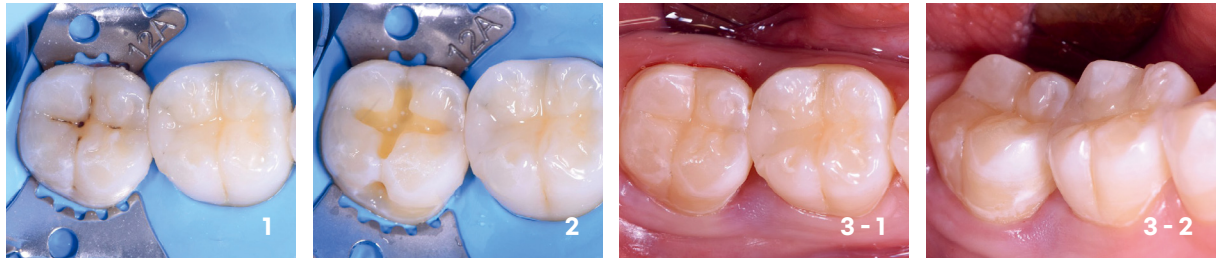


Clinical Cases

Cavity restoration on #26



Cavity restoration on #47



EsCom100 is light-cured restorative hybrid composite resin for posterior and anterior restorations. EsCom100 has high compressive strength and excellent durability.

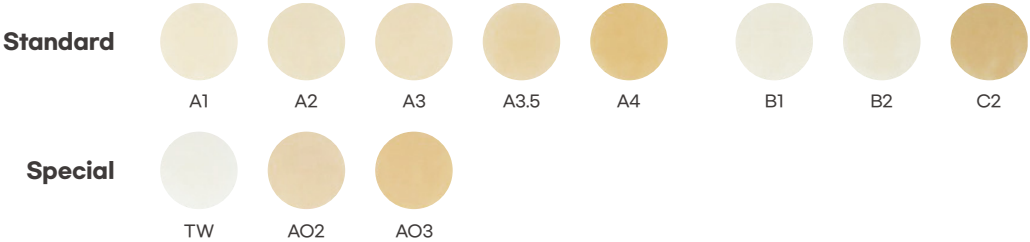
Characteristics

- High compressive strength
- Low polymerization shrinkage
- Easy to handle
- Excellent matching with natural tooth
- Available shades (11 shades):
A1, A2, A3, A3.5, A4, B1, B2, C2, AO2, AO3, TW

Indications

- Class I-V restorations
- Direct anterior and posterior restorations
- Direct veneers
- Blocking out of undercuts
- Repair of composite and ceramic veneers
- Core build up
- Splinting mobile teeth

Shade



Syringe type: 1 x 4g syringe

#3102A1	A1
#3102A2	A2
#3102A3	A3
#3102A35	A3.5
#3102A4	A4
#3102AO2	AO2
#3102AO3	AO3
#3102B1	B1
#3102B2	B2
#3102C2	C2
#3102TW	TW

Capsule type: 20 x 0.25g capsules

#3102A1PCS	A1
#3102A2PCS	A2
#3102A3PCS	A3
#3102A35PCS	A3.5
#3102A4PCS	A4
#3102AO2PCS	AO2
#3102AO3PCS	AO3
#3102B1PCS	B1
#3102B2PCS	B2
#3102C2PCS	C2
#3102TWPCS	TW

EsCom100 system kit :

5x4g syringe
(A1, A2, A3, A3.5, B2),
1 EsBond, 1 FineEtch,
accessories
#3202P05

EsCom100 syringe kit :

8 x 4g syringe
(A1, A2 x 2, A3 x 2, A3.5,
B2, AO3)
#3202P08

Capsule dispensing gun

#9803CS

EsCom250

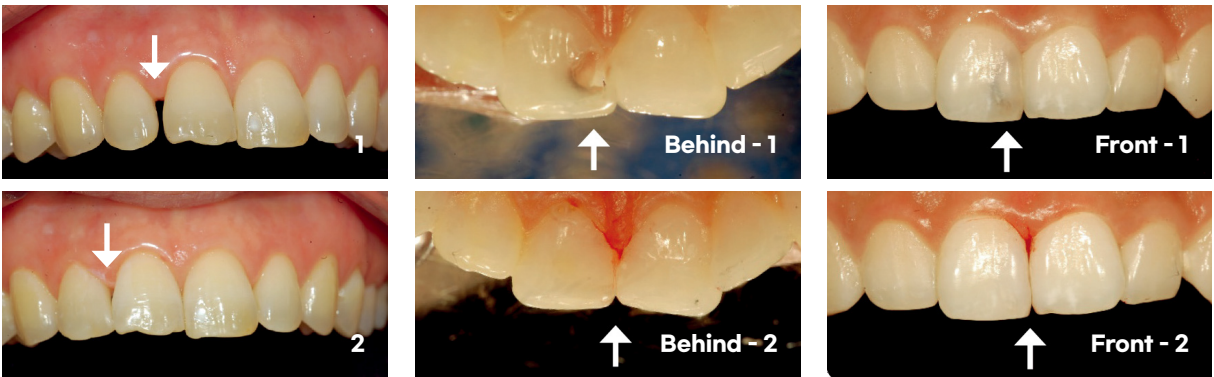
Light-cured restorative hybrid composite resin



Clinical Cases

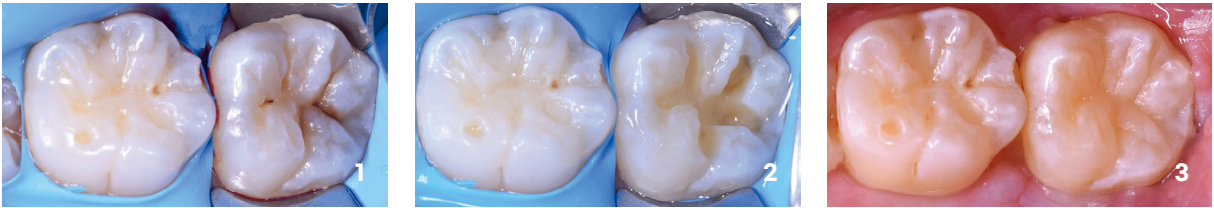
Case 1
Anterior teeth diastema #11 #12

Case 2
Anterior teeth diastema #11 (class III)



※Daseul jung (Jung. J. K. Dental Clinic)

Case 3
Cavity restoration on #37



※ Prof. Duck Soo Kim (Kyunghee University Dental Hospital)

EsCom250 is the polymer-based dental restorative material. It can be light-cured intra orally for anterior and posterior restoration including occlusal surface. Filler size ranges from 16nm to 1.2 μ m. Various shades of A1, A2, A3, A3.5, A4, B1, B2, C2, D2, G1, AO2, AO3 and TW for esthetic restoration are provided. All shades of EsCom250 are radio-opaque.

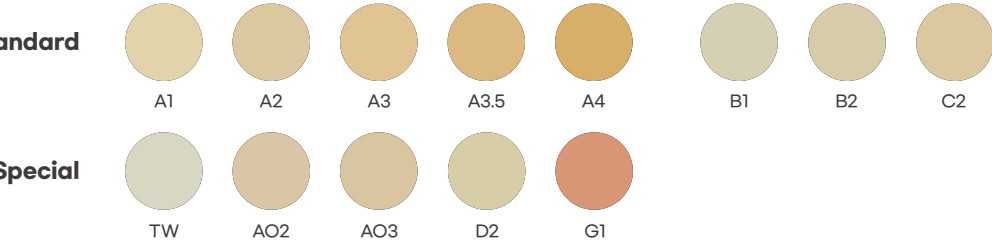
Characteristics

- Apply zirconia filler- enhanced flexural compressive strength
- Excellent ability to hold shape
- Low polymerization shrinkage
- Radiopaque
- Available in 13 shades:
A1, A2, A3, A3.5, A4, B1, B2, C2, D2, AO2, AO3, G1, TW

Indications

- Direct anterior and posterior restorations
- Restoration of fractured (broken) teeth due to trauma
- Restoration of deciduous teeth
- Direct restorative for diastema closure

Shade



Syringe type : 1 x 4g syringe	Capsule type : 20 x 0.25g capsules
#3203A1	A1
#3203A2	A2
#3203A3	A3
#3203A35	A3.5
#3203A4	A4
#3203AO2	AO2
#3203AO3	AO3
#3203B1	B1
#3203B2	B2
#3203C2	C2
#3203TW	TW
#3203D2	D2
#3203G1	G1

EsCom250 system kit :
5x4g syringe
1 EsBond, 1 FineEtch,
accessories
#3203P05

EsCom250 syringe kit :
8 x 4g syringe
#3203P08

EsFlow

Light-cured flowable composite resin



EsFlow is light-cured hybrid flowable composite resin. It uses various sizes of fillers and high molecular weighted Urethane Methacrylate monomer. Therefore EsFlow has superior compressive strength and lower polymerization shrinkage. It is appropriate for Class III - V and deep Class I.

Characteristics

- Highly esthetic
- Suitable compressive strength
- Low polymerization shrinkage
- Easy handling
- Radiopaque
- Strength equivalent to natural enamel after light-cured
- Available shades:
A1, A2, A3, A3.5, AO2, AO3, B1, B2, Blue, LVA1, LVA2, LVA3

Indications

- Direct anterior and posterior restorations
- Restoration of fractured (broken) teeth due to trauma
- Restoration of deciduous teeth
- Direct restorative for diastema closure

Shade



EsFlow LV

Light-cured flowable composite resin



SPIDENT CO., LTD. also provides Low Viscosity type for EsFlow. It is more flowable than standard EsFlow and easier to apply for hard-to-reach spots.

EsFlow 2 x 2g syringe, dispensing tips	EsFlow LV 2 x 2g syringe, dispensing tips	EsFlow Stand Kit : 10 x 2g syringe
#3304A1 A1	#3304LA1 A1	(A1, A2, A3, A3.5, B1, B2, LVA1, LVA2, LVA3, Blue) #3304P10
#3304A2 A2	#3304LA2 A2	
#3304A3 A3	#3304LA3 A3	
#3304A35 A3.5		
#3304AO2 AO2		
#3304AO3 AO3		
#3304B1 B1		
#3304B2 B2		
#3304BL Blue		

EsFlow PLUS ^{NEW}

Light-cured flowable composite resin



EsFlow PLUS is light-cured flowable composite resin for direct restoratives. Using uniform nano fillers, it has enhanced physical strength and can be used even on occlusal surface. EsFlow PLUS is medium viscosity flowable with ideal handling. EsFlow PLUS has no stringing and has excellent gloss retention with easy extrusion.

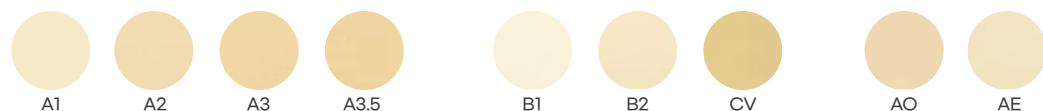
Characteristics

- Exceptional physical strength
- Strong enough to replace a conventional composite
- Excellent gloss retention
- No stringing
- Easy extrusion
- Available shades:
A1, A2, A3, A3.5, B1, B2, CV, AO, AE

Indications

- Class I-V restoration
- Base liner
- Undercut filling
- Repair of composite or ceramic restoration

Shade



EsFlow PLUS Injectable ^{NEW}

Light-cured flowable composite resin



EsFlow PLUS Injectable is light-cured flowable composite resin for direct restoratives. Using uniform nano fillers, it has enhanced physical strength and can be used even on occlusal surface. EsFlow PLUS Injectable is high viscosity flowable with low extrusion force. EsFlow PLUS Injectable is thixotropic and has no stringing.

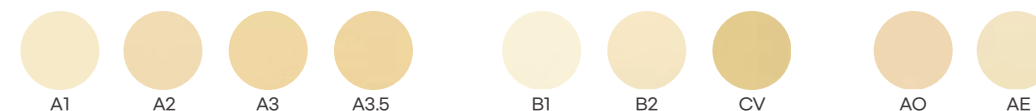
Characteristics

- Exceptional physical strength
- Strong enough to replace a conventional composite
- Thixotropic
- Excellent gloss retention
- No stringing
- Easy extrusion
- Available shades:
A1, A2, A3, A3.5, B1, B2, CV, AO, AE

Indications

- Class I-V restoration
- Base liner
- Undercut filling
- Repair of composite or ceramic restoration

Shade



EsFlow PLUS BulkFill **NEW**

Light-cured flowable composite resin



EsFlow PLUS BulkFill is light-cured flowable composite resin for direct restoratives. Using uniform nano fillers, it has enhanced physical strength and enough depth of cure to be polymerized as bulk filled. EsFlow PLUS Bulkfill has great flowability and has no stringing.

Characteristics

- Exceptional physical strength
- Strong enough to replace a conventional composite
- No stringing
- Easy extrusion

Indications

- Class I - V restoration
- Base Liner
- Undercutting filling

EsFlow PLUS Core it LC **NEW**

Light-cured flowable composite resin



EsFlow PLUS Core it LC is light-cured flowable composite resin for direct restoratives. Using uniform nano fillers, it has enhanced physical strength and enough depth of cure to be used as core build up material. EsFlow PLUS Core.it LC is high viscosity flowable with low extrusion force. EsFlow PLUS Core.it LC is thixotropic and has no stringing.

Characteristics

- Exceptional physical strength
- Strong enough to replace a conventional composite
- Thixotropic
- Excellent gloss retention
- No stringing
- Easy extrusion

Indications

- Core build up

Core.it Dual

Flowable dual cured core build-up resin



Core.it Dual is dual-cured composite material for fabrication of core build ups and post cementations. It has excellent physical properties and can be easily applied onto the tooth.

Characteristics

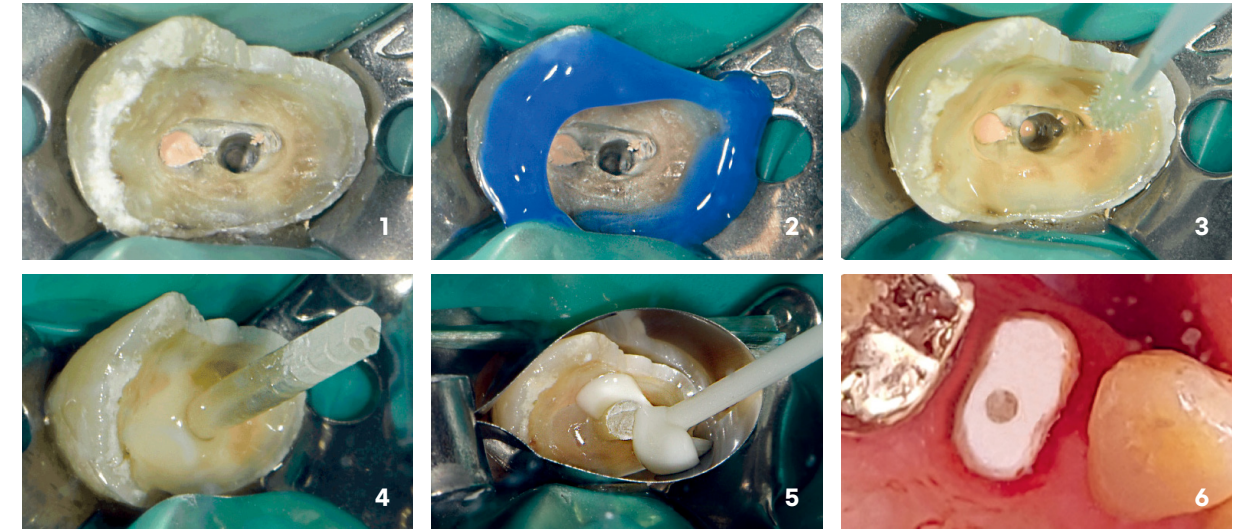
- Excellent flow & thixotropy
- Low polymerization shrinkage
- Compressive strength parallel to natural dentin
- Excellent radiopaque
- Convenient operation without slumping
- Cuts like dentin
- Available shade : Yellow (tooth), White, Blue

Indications

- All types of core build-up
- Cementation of root posts

Clinical Cases

Molar Core build up



※ Prof. Yoo Seok Shin (Yonsei University Dental Hospital)

**Syringe type : 2 x 10g syringe,
mixing tips, eco tips, intraoral tips**

#2101BL Blue
#2101WH White
#2101YL Yellow

Syringe dispensing gun

#98CA50

**Cartridge type :
1 x 50g cartridge**

#2101BLPCA Blue
#2101YLPCL Yellow

Core.it system kit :
2 x 10g syringe(yellow),
eco tips, mixing tips,
intraoral tips,
1 EsBond, 1 EsBond Activator,
1 FineEtch, accessories
#3304P10

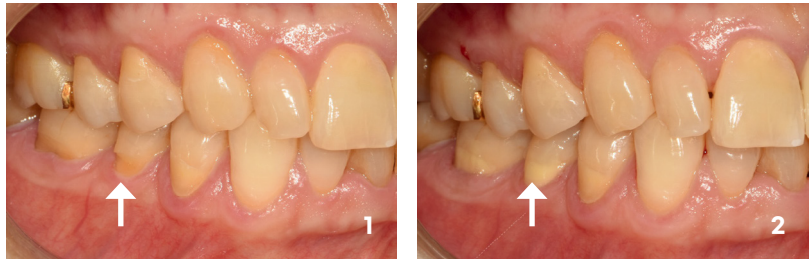
BaGIC II

Radiopaque glass ionomer filling material



Clinical Cases

Class V restoration - A



Class V restoration - B



BaGIC II is self-cured (chemical cured) glass ionomer filling material, which has radiopacity and fluoride release effect. BaGIC II has high strength, and shows sufficient wear resistance and durability. It has excellent chemical bonding force against the tooth, and is excellent in sealability at marginal sealing.

Characteristics

- Excellent biocompatibility
- Fluoride release (Anticariogenic effect)
- Excellent radiopacity
- Low acid erosion
- Low solubility
- Thermal expansion similar to natural teeth
- No shrinkage
- Great marginal adaptation
- Ideal handling and packability
- BPA and HEMA Free

Indications

- Restoration of primary teeth
- Core build-up
- Class III restoration
- Class V restoration
- Limited Class I restoration

15g powder, 10g liquid

#3405A1	A1	#3405A2	A2
#3405A3	A3	#3405B3	B3

Temp.it

Light-cured temporary filling material



Temp.it is light-cured elastic material for temporary restorations. It has advantages of easy removal as one piece without any damage to preparation boundaries. We also have flowable type, Temp.it Flow, which has same characteristics but easier dispensing type, in syringe.

Characteristics

- Easy to place
- Easy removal in one piece
- Durable and tight marginal seal
- Low polymerization shrinkage
- Non-sticky
- Elastic
- Suitable for deep inlay preparation with parallel walls

Indications

- All types of temporary fillings, temporary protection in inlay and onlay technique
- Sealing for implant-screw access

Temp.it 3 x 3g syringe

- #1101BL Blue
- #1101YL Yellow

Temp.it Flow 4 x 1.2ml syringe

- #1102BL Blue
- #1102YL Yellow

Hexa-Temp

Self-cured temporary crown and bridge material

*EsTemp C&B in USA



Hexa-Temp is bisacrylic self-cured resin, ideal for temporary crown and bridge with ease. It is practical thanks to the compatibility of its cartridge with the 1:1 dispenser and mixing tips of VPS impression materials. Hexa-Temp doesn't need trimming or relining. Hexa-Temp is ideal for long-term temporaries and longer bridge spans as it has exceptional compressive strength and flexural strength with good durability. It is suitable for long term with high fracture resistance. Hexa-Temp shows high gloss, even without polishing, and fluorescence similar to natural teeth.

Characteristics

- High compressive and flexural strength
- Highly aesthetic provisional materials
- Convenient work steps, easy to trim and polish
- High stability of shape and shade
- Lower shrinkage and polymerization temperature
- Applicable with mixing tip of impression materials

Indications

- Fabrication of temporary crown, bridges, inlays, onlays, partial crowns and veneers

1 x 50ml cartridge, mixing tips

- | | |
|------------------|------------------|
| #1204A1 A1 | #1204A2 A2 |
| #1204A3 A3 | #1204TW TW |

Temporary crown mixing tips

- | |
|--------------------|
| #95SK50 50EA |
| #95SK10 10EA |

EsTemp Eugenol / NE

Temporary cement for temporary crown and bridge



EsTemp Eugenol / NE is suitable for temporary cementation of temporary crown and bridge. EsTemp Eugenol is zinc oxide eugenol temporary cement and EsTemp NE is zinc oxide non-eugenol temporary cement.

Characteristics

- Easy to mix & loss-zero syringe type
- Possible to use Auto-mixing tip
- Low film thickness values
- Enough flowability
- Easy removal

Indications

- Temporary cementation of temporary crown, bridge inlay and onlay
- Temporary cementation of provisional and permanent restoration

EsTemp Eugenol : 2 x 10g syringe, eco tips

#1306PAU

EsTemp NE : 2 x 10g syringe, eco tips

#1305PAU

EsTemp Implant

Non eugenol temporary resin cement for implant retained crown



EsTemp Implant is non-eugenol, dual-cured temporary resin cement for luting implant-retained crowns. It has excellent strength and durability, which allow long-term cementation. It has mechanical retention only - not chemical- with ideal elasticity so that it is easy to remove temporary restorations. The dual cure formula makes it quicker to remove excess material after light cure (5-10 secs).

Characteristics

- Dual cure (Light cure & Self cure)
- Radiopaque
- Easy to use (syringe type)
- Secure retention & retrievable
- Excellent strength and durability
- Dual-cure formula makes it quicker to remove excess materials after light-cured

Indications

- Temporary resin cement for implant-retained crowns

EsTemp Implant : 1 x 8g syringe, mixing tips, ecotip

#1307PAU

EsCem

Dual-cured self-adhesive resin cement



EsCem is dual-cured self-adhesive resin cement. It contains MDP, an adhesive monomer, to improve chemical interaction and durability with the hard tissue. EsCem shows strong adhesion to tissues as well as various indirect restorations, such as zirconia, all-ceramic, composite, and metal. It does not require pre-treatment. It is easy to handle and has radiopacity.

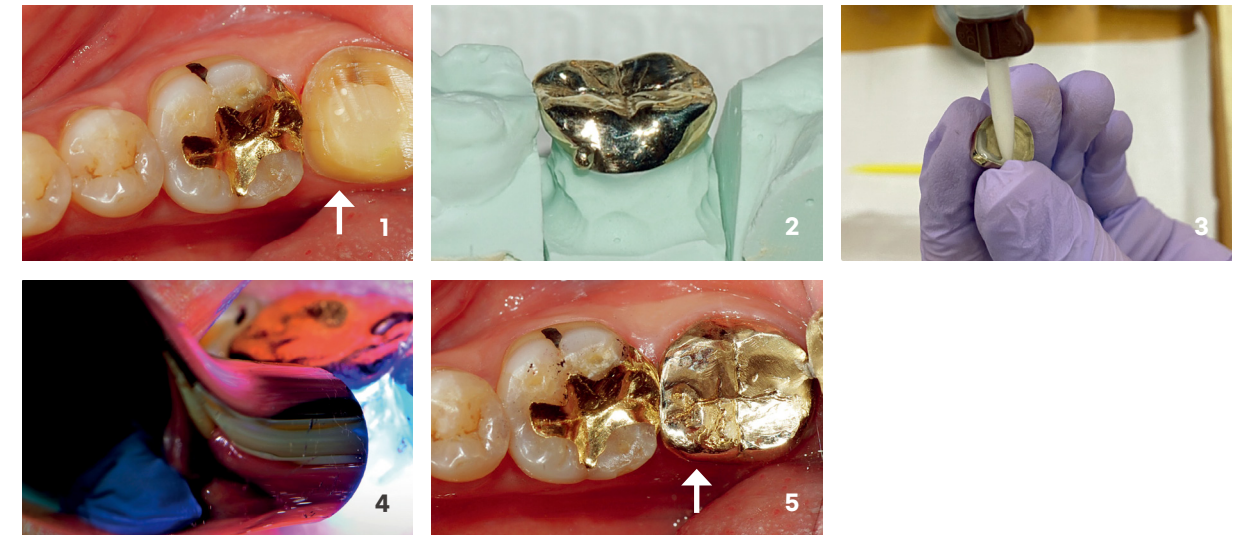
Characteristics

- Powerful adhesive strength to all indirect restoration without pre-treatment
- Reduced chair time by no need of etching, priming or bonding
- Easy-to-use automix type
- Available shades: A2(Universal), TW
- Easy to remove excess material with 1 second of tack curing/ Radiopacity

Indications

- Final cementing of all-ceramic, composite, or metal inlays, onlays, crowns, and bridges
- Final cementing of posts and screws
- Final cementation of all-ceramic, composite, or metal restorations on implant abutment

Clinical Cases



※ Prof. Chan Park (Chonnam University Dental Hospital)

1 x 8g syringe, mixing tips

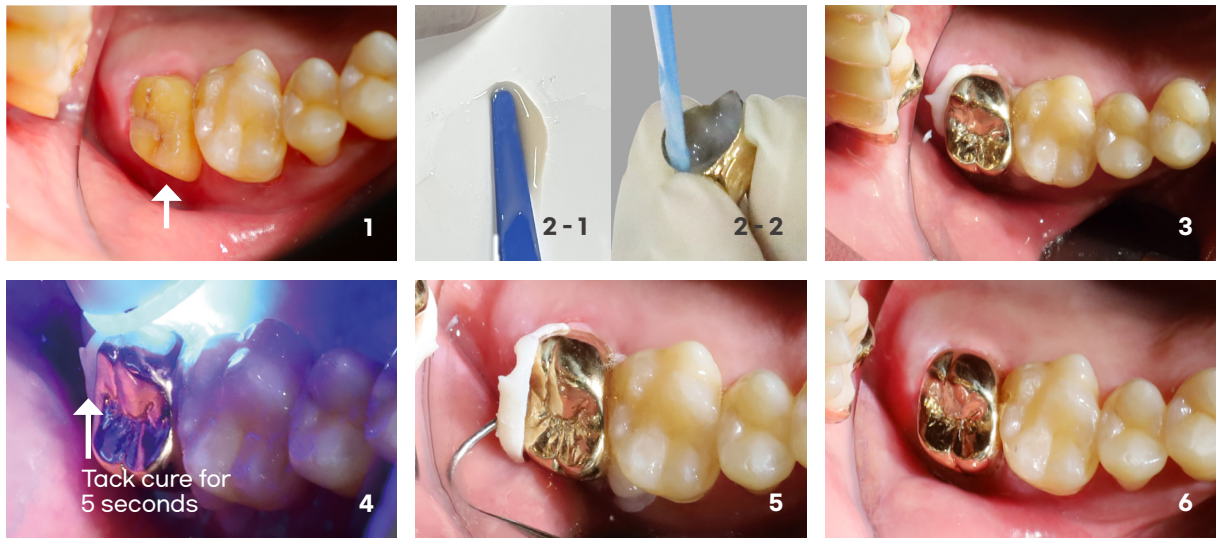
#3805A2 A2 #3805TW TW

EsCem RMGI NEW

Resin-modified Glass Ionomer Luting Cement



Clinical Cases



EsCem RMGI is resin-modified glass ionomer cement. Its light-curing option makes it easy to remove excess cement, allowing shorter chair time. EsCem RMGI is delivered in dual syringe, consisting of the base and catalyst. It is used to cement indirect restorations.

Characteristics

- Dual dispensing type (Auto-mix and hand-mix)
- Excellent physical strength with Zirconium Silicate (ZrSiO₄)
- Easy clean up with tack curing 5 seconds
- Exceptional bond strength to tooth structure and indirect restorations
- Reliable bond strength over time
- Ideal film thickness
- Cream-like texture and easy handling
- Outstanding esthetic shades and high translucency of light (49%)
- Continuous fluoride release

Indications

- Cementation of the following indirect restorations
- Metal-based inlays, onlays, crowns and bridges
- Resin inlays, onlays, crowns and bridges
- All ceramic inlays
- All high-strength (zirconia-based) all-ceramic crowns and bridges
- Metal, ceramic, and fiber posts

1 x 9g syringe, mixing tips

#3806A2 A2

K-Bond Universal ^{NEW}

Light-Cured Universal Bonding Agent



K-Bond Universal is universal bonding agent that combines etching, primer, and adhesive resin in a single bottle. It provides excellent adhesive strength. K-Bond can be used on dentin and enamel for various types of direct restorations.

Characteristics

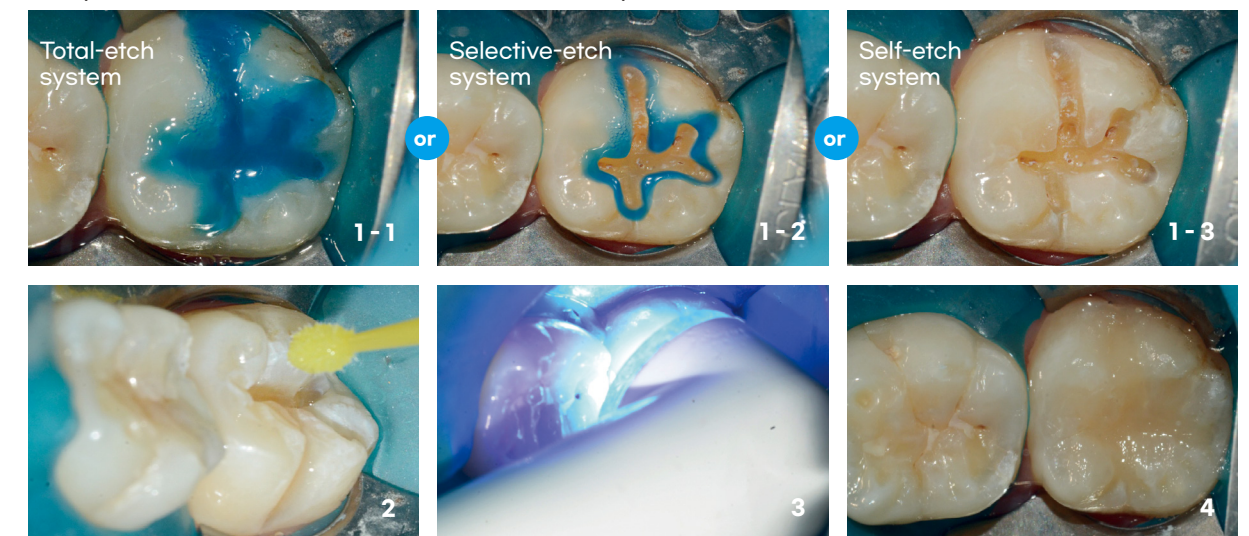
- Compatible with total-etch, selective and self-etch system
- Suitable for direct and indirect bonding procedures
- Homogeneous liquid
- Dual-cure capability without separate activator (pH 3.5)
- Aliphatic amine, instead of aromatic amine, helps product stability and color stability
- Single drop system

Indications

- Bonding of all direct composite restorations
- Bonding of dual/self cure composite and core build-ups
- Repairs of composite fillings
- Root surface desensitization

Clinical Cases

Compatible with total-etch, selective and self-etch system



1 x 5ml bottle

#370400

EsBond

Light-cured 5th bonding agent



EsBond is 5th generation bonding agent that provides high bonding strength in a convenient single bottle application. It is designed to bond all classes of direct composite restorations to dentin, enamel, as well as composite, porcelain and amalgam.

Characteristics

- 5th Generation bonding agent
- Direct light-cured adhesive system
- High bonding strength
- Wet bonding system

Indications

- All direct composite restorations
- Composite indirect restorative cementation
- Composite repairs
- Composite core build-ups (for use with EsBond Activator)

1 x 5ml bottle
#370200

Es Bond Kit : 1 EsBond, accessories
#3702P01

FineEtch

Etching gel



FineEtch 37% is a phosphoric acid (H3PO4) semi-gel-type agent intended for use on dentin and enamel. FineEtch will effectively remove the smear layer and help successful bonding.

Characteristics

- 37% phosphoric acid and semi-gel consistency for ideal applications
- Effective removal of smear layers, enhancing the bonding between tooth and restorative material
- Bio-compatible polymeric materials contained
- Complete residue-free after water-spray
- Excellent viscosity
- Also available as 10%, 35%, and 38%

Indications

- MDR TF Indication
- Pretreatment etchant before resin and sealant (help to having a strong bonding strength between resin and teeth)
- Remove smear layer of dentin and enamel

Effectiveness

	Before	After
Enamel		
Dentin		

3 x 5ml syringe, dispensing tips
#3601P03

4 x 1.2ml syringe, dispensing tips
#3601P04

Guttapercha Points

Guttapercha Points



Characteristics

- Hand-rolled to the highest standards
- Cadmium-free, radiopaque
- Gamma irradiation sterilized
- Inspected four times to guarantee flawless consistency in size, taper and uniformity

ISO Type 120 x .02 points or 100 x .02 points	#420215GP 15 #420220GP 20 #420225GP 25 #420230GP 30 #420235GP 35 #420240GP 40 #420245GP 45 #420250GP 50 #420255GP 55 #420260GP 60 #420270GP 70 #420280GP 80 #420290GP 90 #4202100GP...100 #4202110GP...110 #4202120GP...120 #4202130GP...130 #4202140GP...140	Conventional (Regular) Type 100 x feathered type points #42021540GP... Assorted 15-40 #42024580GP... Assorted 45-80 #420290140GP... Assorted 90-140 #4221XFGP X-Fine #4221FFGP F-Fine #4221MFGP M-Fine #4221FIGP Fine #4221FMGP F-Medium #4221MDGP..... Medium #4221MLGP M-Large #4221LGGP Large #4221ASGP Assorted (MF / F / FM / M)	.04 Tapered Type 60 x .04 points #4241FMGP F-Medium #4241LGGP.....Large #4241FLGP.....F-Large #4221ASGP...Assorted #420415GP15/.04 #420420GP.....20/.04 #420425GP.....25/.04 #420430GP.....30/.04 #420435GP.....35/.04 #420440GP40/.04 #420445GP.....45/.04 #42041540GP..... Assorted 15-40/.04	#420630GP..... 30/.06 #420635GP..... 35/.06 #420640GP..... 40/.06 #420645GP..... 45/.06 #42061540GP.....Assorted 15-40/.06
	Japanese Type 120 X feathered type points #4241SLGP Small #4241FSCP F-Small #4241MDGP..... Medium	.06 Tapered Type 60x.06 points #420615GP..... 15/.06 #420620GP..... 20/.06 #420625GP..... 25/.06	Detray Type 100 x feathered type points #4251XXFGP...XX-Fine #421XFGP X-Fine #4251FIGP Fine #4251MDGP... Medium #4251ASGP... Assorted	
			Endo-aide #4232GP 240xGP Points in dispenser (#15-80 assorted)	

Paper Point

Absorbent Paperpoints



Characteristics

- Used in root canal therapy
- Removes moisture from root canal, introduces medicaments
- Hand rolled to ensure better absorbency
- ISO/ADA sized
- Gamma irradiation sterilized

ISO Type 200 x .02 points or 100 x .02 points	#41021540 Assorted 15 - 40 #41024580 Assorted 45 - 80 #410290140... Assorted 90 - 140	.04 Tapered Type 100 x .04 points	#410415PP 15/.04 #410420PP20/.04 #410425PP25/.04 #410430PP30/.04 #410435PP35/.04 #410440PP 40/.04 #410445PP 45/.04 #41041540PP Assorted 15-40/.04	.06 Tapered Type 100 x .06 points	#410615PP 15/.06 #410620PP20/.06 #410625PP25/.06 #410630PP30/.06 #410635PP35/.06 #410640PP40/.06 #410645PP45/.06 #41061540PP Assorted 15-40/.06
	Conventional (Regular) Type 100 x feathered type points				
	#4121XXFPP XX-Fine #4121XFPP..... X-Fine #4121MDPP Medium #4121COPP Coarse #4121XCPP X-Coarse #4121ASPP Assorted (XF / F / M / C)				
	Accessory (Cell pack) Type 40 cells of 5 points	Endo-aide	#4132PP400xPP Points in dispenser (#15-80 assorted)		
	#4131XXFPP XX-Fine #4131XFPP..... X-Fine #4131FIPP.....Fine #4131MDPP Medium #4131COPP Coarse #4131XCPP X-Coarse				

VioPex

Premixed Calcium Hydroxide paste with Iodoform



VioPex is temporary root canal filling material with excellent radiopacity. It is antibacterial, premixed paste composed of Calcium Hydroxide with Iodoform.

Characteristics

- Easy to clean and remove
- Good water solubility
- Excellent antibacterial effect
- Superior radiopacity
- High flowability
- Excellent biocompatibility
- Easy to handle (for syringe paste type)

Indications

- Apexification
- Formation of hard tissue barrier
- Checking the irregular shape of root canal
- Root canal filling for exudation control
- Pulp capping

1 x 2.2g syringe, dispensing tips, endo stop

#440300

VioPaste

Premixed Calcium Hydroxide paste with Barium Sulfate



VioPaste is water-soluble temporary root canal filling material composed of Calcium Hydroxide with Barium Sulfate. This antibacterial premixed paste offers excellent radiopacity. It is easy to clean and remove.

Characteristics

- Easy to clean and remove with good water solubility
- Excellent antibacterial effect
- Superior radiopacity
- Strong bactericidal effect with high pH
- High flowability
- Excellent biocompatibility
- Easy to handle (for syringe paste type)

Indications

- Apexification
- Formation of hard tissue barrier
- Check the irregular shape of root canal
- Root canal filling for exudation control
- Pulp capping

1 x 2g syringe, dispensing tips, endo stop

#440200

VioSeal

Resin based sealer / Root canal sealing material



VioSeal is epoxy resin based root canal sealer which is a paste-paste type in dual syringe. It has outstanding chemical and physical properties, including extremely excellent sealing property and biocompatibility.

Characteristics

- Excellent biocompatibility
- Superior radiopacity
- Tight sealing
- Easy to mix paste-paste
- Insoluble in tissue fluids
- Antimicrobial agent
- Radiopaque

Indications

- Permanent obturation of root canals in combination with obturation points
- Lubricant & sealing of GP point
- Adhesion agent between GP and root canal wall

1 x 10g syringe, mixing tips, ecotip

#450400

SoftPrep

Root canal preparation EDTA cream



SoftPrep is 15.7% EDTA for lubricant and chelating in root canal. It makes smooth binding and prevents the files from being broken. Water soluble base leaves no residue and easily removes calcifications.

Characteristics

- 15.7% EDTA in a water soluble base makes no residue and easily removes calcifications

Indications

- Lubricating to minimize the binding and breaking of files
- Chelating and removing calcification

2 x 6g syringe, dispensing tips

#430100P02

4 x 1.5g syringe, dispensing tips

#430100P04

Seal.it

Light-cured pit & fissure sealant



Seal.it is light-cured dental material designed for sealing pit and fissure of teeth. It has excellent characteristics of bonding strength, low polymerization shrinkage and abrasion resistance.

Characteristics

- Low polymerization shrinkage
- Low abrasion resistance
- Suitable viscosity with nano-hybrid filler

Indications

- Pit & fissure sealant

2 x 1.2ml syringe, dispensing tips

#821602

Base.it

Light-cured base liner



Base.it contains Calcium Hydroxyapatite in Urethane methacrylate oligomer. It makes Base.it reduce pulp irritation and have low polymerization shrinkage.

Characteristics

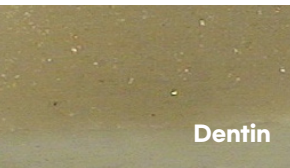
- Pulp irritation reduction
- Low polymerization shrinkage
- Radiopaque
- Secondary dentin formation

Indications

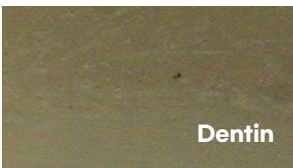
- Base & cavity liner (For thin residual dentin)

Sealing ability

- Adhesive Interface



Optical Microscopy Image (x50)



Optical Microscopy Image (x500)

4 x 2g syringe, dispensing tips

#816104

2 x 2g syringe, dispensing tips

#816102

FineDam

Resin barrier for isolating tissue



FineDam is light-cured resin barrier for isolating tissue adjacent to teeth being bleached.

Characteristics

- Easy handling
- Easy to remove in one piece
- High elasticity

Indications

- Resin barrier for isolating tissue adjacent to teeth being whitened

4 x 1.2ml syringe, dispensing tips

#833300

Block-out Resin

Bleaching reservoirs on plaster model



Block-out Resin is light-cured methacrylate-based utility resin. It is designed for laboratory use such as for bleaching reservoirs on plaster model.

Characteristics

- Low viscosity
- Blue color
- Provides reservoir space for bleaching tray

Indications

- For bleaching reservoirs on plaster model
- Use for other laboratory procedures

4 x 1.2ml syringe, dispensing tips

#843400

IMPRESSION

I-SIL PREMIUM REGULAR SET

LIGHT BODY
REGULAR BODY
HEAVY BODY
PUTTY

I-SIL PREMIUM FAST SET

LIGHT BODY
HEAVY BODY
PUTTY

I-SIL BITE

I-SIL PREMIUM JUMBO

REGULAR BODY
HEAVY BODY
HEAVY BODY FAST SET



IMPRESSION

I-SiL Premium

Vinyl Polysiloxane Impression (A-Silicone) Regular Set



Characteristics

- 1:1 mixing ratio
- Thixotropic
- Snap set effect
- Superior hydrophilicity
 - for excellent flow and the precise detail production
- High dimensional stability
- Excellent recovery after deformation
- High tear strength to maintain impression integrity upon removal

Indications

- Crown, Bridge, Implant impression
- Inlay and onlay impression
- 1 step and 2 step impression techniques

Technical Data

	I-SiL Light Body	I-SiL Regular Body	I-SiL Heavy Body
Color	Pink, Yellow	Blue	Blue
Working Time (min)	1:30	1:30	1:30
Setting Time (min)	4:00	4:00	4:00
Shore A hardness	approx.58	approx.60	approx.70
Strain in Compression (%)	≈ 3	≈ 2	≈ 3.5
Elastic Recovery (%)	>99.6	>99.6	>99.6
Linear Dimensionak Change (%)	< 0.16	< 0.13	< 0.2
Flavor	None	None	None

I-SiL Premium Regular set
2 x 50ml cartridge, mixing tips

- #7101PKP02 Light Body (pink)
- #7205P02 Regular Body (light blue)
- #7307P02 Heavy Body (blue)

I-SiL Premium Fast set
2 x 50ml cartridge, mixing tips

- #7102P02 Light Body Fast (yellow)
- #7308P02 Heavy Body Fast (purple)

I-SiL Premium Putty

Vinyl Polysiloxane Impression (A-Silicone) Regular Set



Characteristics

- Excellent recovery after deformation
- High dimensional stability
- Snap set effect
- Remarkable tear strength
- Superior hydrophilicity
 - for excellent flow and the precise detail production

Indications

- Crown, Bridge, Implant impression
- Inlay and onlay impression

Technical Data

	I-SiL Premium Putty	I-SiL Premium Putty Fast
Color	Purple	Blue
Working Time (min)	1:30	0:40
Setting Time (min)	4:00	2:00
Shore A hardness	approx.70	approx.70
Strain in Compression (%)	≈ 2	≈ 2
Elastic Recovery (%)	>99.4	>99.4
Linear Dimensionak Change (%)	< 0.2	< 0.2
Flavor	None	None

2 x 290ml jars

- #7409P02 Regularset(purple)
- #7410P02 Fast set (blue)

I-SiL Bite

VPS bite registration material designed to make accurate interocclusal records



Characteristics

- Exceptional accuracy
- Shore A Hardness of A85
- Thixotropic
- Easy to mix and dispense
- Easy to position in Occlusal and Buccal

Technical Data

	I-SiL Light Body
Color	Light Blue
Working Time (min)	0:30
Setting Time (min)	1:30
Shore A hardness	approx.85
Strain in Compression (%)	Non-Applicable
Elastic Recovery (%)	Non-Applicable
Linear Dimensionak Change (%)	< 0.06
Flavor	None

2 x 50ml cartridge, mixing tips

#7511P02

I-SiL Premium Jumbo

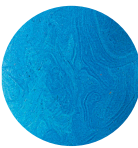
Regular Set / Fast Set



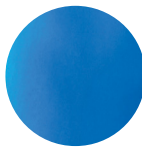
Characteristics

- Same great impression material as I-SiL Premium available for Vacu-Mixer
- Improved hydrophilicity at the surface from the start of mixing
- Designed to minimize voids and bubbles
- High tear strength to maintain impression integrity upon removal

Comparison of auto-mixing and manual mixing



manual mixing



automixing by Vacu-Mixer

Technical Data

	I-SiL Jumbo Regular	I-SiL Jumbo Heavy
Color	Blue	Blue
Working Time (min)	1:30	1:30
Setting Time (min)	4:00	4:00
Shore A hardness	approx.60	approx.70
Strain in Compression (%)	≈ 2	≈ 3.5
Elastic Recovery (%)	>99.6	>99.6
Linear Dimensionak Change (%)	< 0.13	< 0.2
Flavor	None	None

10 x 120ml cartridge

#7307PJU · Heavy Body (blue)

#7308PJU · Heavy Body fast set (purple)

#7205PJU · Regular Body (light blue)

| ANESTHETICS & OTHERS

ANESTHETICS

NOP Needle

EQUIPMENTS

Focus Plus

Vacu-Mixer

CR scanner

DISPOSABLES

Mixing Tips

- Yellow

- Green

- Core

- Cement

- Vacu-Mixer

Bite Trays



ANESTHETICS & OTHERS

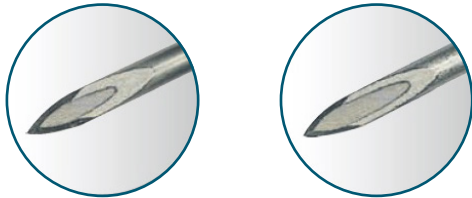
NOP Needle



Characteristics

- Ultra-sharp, tri-bevel lancet offers smooth entry into tissue, enhancing patient comfort
- Silicone coating significantly reduces pain and tissue damage
- Triangle bevel indicator for needle tip orientation
- EO Sterilized

3D cutting



27G/S
(0.4x21mm)

27G/L
(0.4x30mm)

27G/L
(0.4x38mm)

27G/L
(0.4x35mm)

30G/XS
(0.3x12mm)

30G/S
(0.3x12mm)

30G/S
(0.3x21mm)

30G/L
(0.3x25mm)

30G/XS
(0.26x12mm)

#6127SH 27G/Short (04x21mm) (Blue)	#6130SO 30G/Short (0.3x16mm) (Pink)
#6127LG 27G/Long (0.4x30mm) (Navy)	#6130SH 30G/Short (03x21mm) (Orange)
#6127GL 27G/Long (0.4x35mm) (Brown)	#6130LO 30G/Long (0.3x25mm) (Red)
#6127XL 27G/Long (0.4x38mm) (Purple)	#6131XS 31G/X-short (0.26x12mm) (Green)
#6130XS 30G/X-short (0.3x12mm) (Yellow)	

Focus Plus



Ultra-light(130g), Cordless, Sleek, OLED screen, Handpiece LED curing light that features a digital display and 1-touch functionality.

Consistent output of 1,800mW/cm2 (high-mode) 4modes to choose from including soft-start mode to reduce polymerization shrinkage. Made in korea.1-year warranty

Focus Plus

#520200

Vacu-Mixer

Vacu-Mixer is world's first portable impression auto-mixer. With a touch of the button, it brings you flawless auto mixing without voids.

- 1:1 ratio eliminates mixing errors
- 10 seconds for full tray loading
- No voids
- Portable and compact
- Flawless auto mixing reduces chairtime and minimizes retakes



Vacu-Mixer

#510100

SPISCAN PRO



SPISCAN PRO is Phosphor Plate Scanner which delivers great digital X-ray image with 35µm pixel size. By providing different imaging plate sizes (0,1,2,3,4c), it leads users to use on various cases. We provide our own software and yet through TWAIN driver, it can also be linked with other dental diagnostic software.



SPISCAN PRO

#530300

Mixing Tips

Impression Mixing Tips



For use with vinyl polysiloxane impression material cartridges Homogeneous mixing results with reduced waste. Universal fit.

#91YL50 Yellow mixing tips, pkg of 50
#91GR50 Green mixing tips, pkg of 50

Core Mixing Tips



Brown mixing tips with adjustable intraoral attachment to ensure precision application of core materials. Universally compatible with dual barrel syringe systems. 1:1 ratio.

#92BR50 pkg of 50

Cement Mixing Tips



Brown tapered mixing tips for dual barrel syringe system. Homogeneous mixing results. 1:1 ratio.

#93BR50 pkg of 50

Vacu-Mixer Mixing Tips



For use with Vacu-mixer's impression material, I-Sil jumbo.

#91BK40 pkg of 40

Bite Trays

Bitetray



- Disposable impression trays for crown, bridge & bite registration
- Thin occlusal webbing provides superb accuracy



G1



G3



G4



G5

#99G100 G-1 sideless, pkg of 50

#99G300 G-3 full side, pkg of 50

#99G400 G-4 quadrant, pkg of 35

#7308P02 G-5 anterior, pkg of 35

Bitetray Metal Frame

- Metal stamped Bitetrays add rigidity to the frame eliminating distortion



MG2



MG4



MG7

#99MG200 MG-2 Metal-stamped half side, pkg of 50

#99MG400 MG-4 Metal-stamped quadrant, pkg of 35

#99MG700 MG-7 Metal-stamped anterior, pkg of 35



K-BOND

UNIVERSAL

Light-Cured Dental Adhesive

- ✔ Direct bonding
- ✔ Repair cases
- ✔ Indirect luting
- ✔ Hypersensitivity treatment